



ANNO 1350

HOTEL SCHLOSS MÖNCHSTEIN  
SALZBURG

## Approaching plan to the Hotel Schloss Mönchstein

**Dear guest!**

We wish you a pleasant journey to the  
HOTEL SCHLOSS MÖNCHSTEIN\*\*\*\*\*  
and we are looking forward to welcoming  
you at our hotel!

Driving on the  
**highway A1**  
you take  
the exit  
„Salzburg Mitte“



Turn into the  
**Münchner  
Bundesstrasse**  
and follow this  
road



You will pass an  
**Aral-petrol  
station** on your  
right. Keep on  
driving straight  
ahead.



After another  
„Jet-petrol  
station“ the  
name of the  
street will  
change into  
**Ignaz-Harrer-  
Strasse**



You stay on this  
road and keep  
driving straight  
ahead.



At the last  
junction before  
the „Lehener“  
bridge you take  
a right.



You are driving  
now through  
the  
„**Gaswerk-  
gasse**“



**HOTEL HOTLINE:  
0043 662 84 85 55-0**

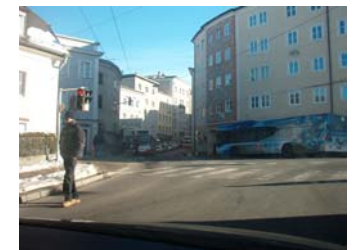
You keep driving  
straight on until  
you drive  
through a tunnel  
under the  
railway.



In this tunnel  
you shape up on  
the **left side** of  
the road.



After the tunnel  
you have to turn  
**left** into the  
„**Müllner-  
Hauptstrasse**“



Follow this road  
for about 120  
metres.





## Approaching plan to the Hotel Schloss Mönchstein

On top of this small hill you turn right.



You are now driving in the „Augustinergasse“.



Follow this alley up. On your right handside you will find the „Augustinerbräu“ which is a very popular location for a cool drink in the summer



After a curvy drive up the mountain we are pleased to welcome you at the **Hotel Schloss Mönchstein!**



**HOTEL HOTLINE:  
0043 662 84 85 55-0**

